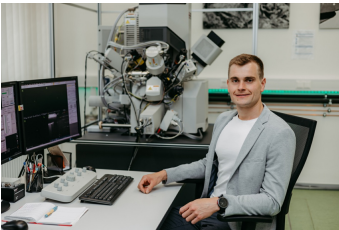




## **STUDY PROGRAM BIOMECHANICAL ENGINEERING**

### **Individual student advising Biomechanical Engineering**

- ▶ support in choosing a study program
- ▶ informations on the content of the study programme
- ▶ advice on all questions concerning the application process



#### **M.Sc. Karsten Harnisch**

Mail: > [bime@ovgu.de](mailto:bime@ovgu.de) (mailto:bime@ovgu.de)

#### **Address**

Otto-von-Guericke-University Magdeburg  
Institute of Materials and Joining Technology IWF, Chair Metallic Materials  
Student advising Biomechanical Engineering  
Universitätsplatz 2  
39106 Magdeburg, Germany

#### **Visiting address**

Building 50 - Room 215 (Große Steinernetischstraße 6, 39104 Magdeburg)