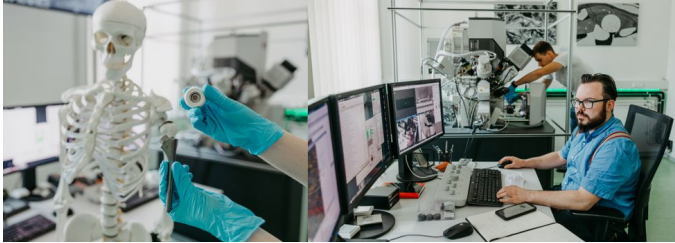


STUDY PROGRAM BIOMECHANICAL ENGINEERING



This makes the Biomechanical Engineering program special:

- ▶ Otto von Guericke University offers unique and optimal conditions for the Biomechanical Engineering program. Only a few locations can possess a university with a technical focus and a university hospital in the same city.
- ▶ Both institutions have been working and researching intensively on medical engineering focal points for several years. This has led to the emergence of numerous interdisciplinary collaborations and research projects, from which the entire study program benefits. The resulting close exchange between the lecturers of the different departments promotes your optimal education.
- ▶ Our students therefore benefit from excellent study conditions: excellent equipment in the university's teaching and research facilities and optimal support during their studies.
- ▶ Biomechanical Engineering does not originate from an established scientific field, but from the dynamically growing needs of modern technology and medical development. For this reason, the education focuses on skills that can help in a very concrete way to invent new innovations.
- ▶ Against the backdrop of demographic change with new altered requirements such as autonomy and mobility in old age and regenerative medicine, there is a growing demand for innovative ideas and their implementation in high-performance, reliable practical and sustainable medical products and services. Increased health awareness in both private and professional environments, as well as rapid medical-technical progress, reinforce this demand.
- ▶ The Biomechanical Engineering program provides you with technical and methodological skills that enable you to take a holistic view of biomedical-technical relations and principles based on sound fundamental knowledge. This ensures that you can quickly acquire new, as well as more in-depth knowledge in the course of lifelong learning.
- ▶ Optimal city size, not too big and not too small
- ▶ Inexpensive and uninhabitable living and housing
- ▶ Green city on the Elbe
- ▶ Active student scene
- ▶ Study at a campus with a long engineering tradition
- ▶ Organizing Your Stay
- ▶ First steps before studying

This is Magdeburg! Beach bar - Uniporta - Sternbrücke - Hundertwasserhaus - Monastery - Elbe and Cathedral (15 Bilder)



















Domplatz (Bild 1 von 15) » Vorwärts



« Zurück **Elbe** (Bild 2 von 15) » Vorwärts »



« Zurück **Sternbrücke** (Bild 3 von 15) » Vorwärts »



« Zurück **Strandbar an der Elbe** (Bild 4 von 15) » Vorwärts



« Zurück **Segeln auf der Elbe** (Bild 5 von 15) » Vorwärts



« Zurück **Nordpark - direkt an der Uni** (Bild 6 von 15) » Vorwärts »



« Zurück **Yoga im Nordpark** (Bild 7 von 15) » Vorwärts »



« Zurück **Nordpark - Studierendenfest** (Bild 8 von 15) » Vorwärts



« Zurück **Mit dem Fahrrad unterwegs** (Bild 9 von 15) » Vorwärts



« ZurückIm Jahrtausendturm (Bild 10 von 15) » Vorwärts



« ZurückJahrtausendturm im Elbauenpark (Bild 11 von 15) » Vorwärts



« Zurück **Hundertwasserhaus** (Bild 12 von 15) » Vorwärts



« Zurück **Vom Hundertwasserhaus geblickt** (Bild 13 von 15) » Vorwärts



« Zurück **Uni-Weihnachtsmarkt** (Bild 14 von 15) » Vorwärts



« Zurück **Campustower am Uniplatz** (Bild 15 von 15) »